



THE STATE OF ESSEX COUNTY

BUILDING FOR THE FUTURE





THE DATA

IMPACTESSEXCOUNTY.ORG

**THE
INDICATORS**



**CHILDREN
& YOUTH**



**COMMUNITY
LIFE**



DEMOGRAPHICS



HEALTH



**FINANCIAL
SELF-SUFFICIENCY**



**ECONOMY &
WORKFORCE**

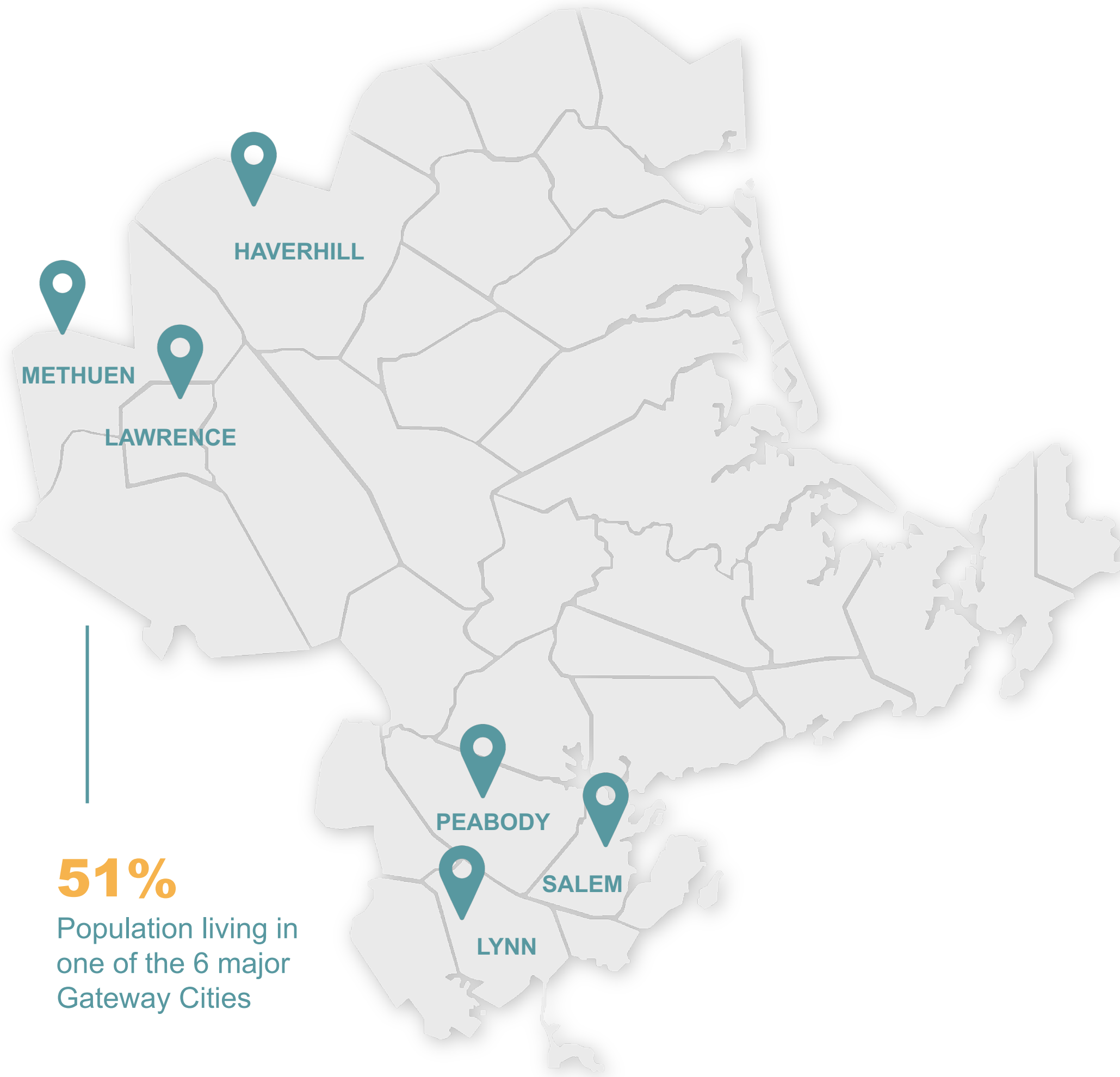


RACIAL EQUITY



EDUCATION

**ESSEX COUNTY IS
DYNAMIC:
GROWING, AGING &
BECOMING MORE DIVERSE**



51%

Population living in one of the 6 major Gateway Cities

SINCE 2010:

823,900

Residents, up 11% since 2010

AGING POPULATION

Residents age 60+ most growth

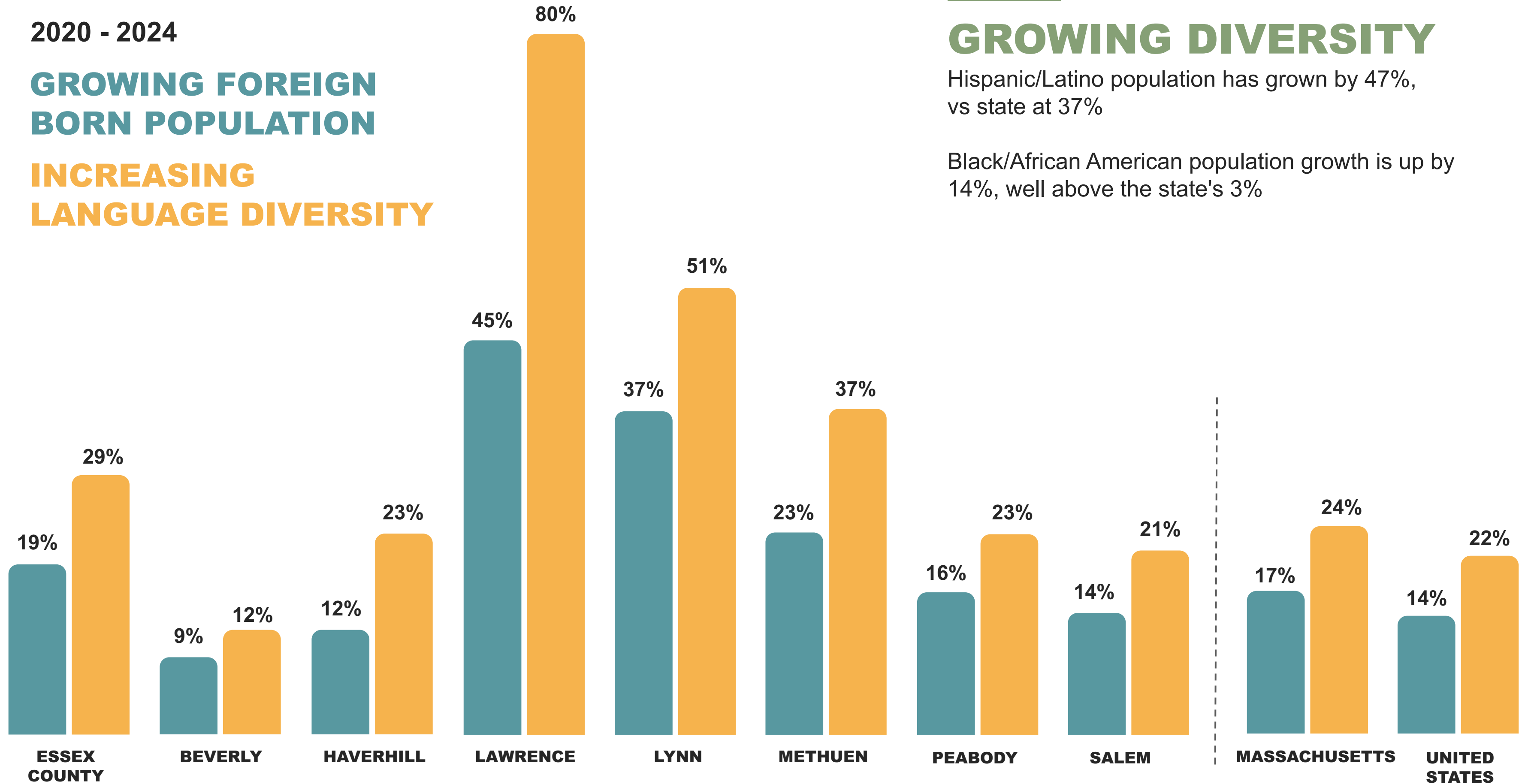
35% OF FAMILIES

With children under 18 are headed by single parents
(Source: ImpactEssexCounty.org, ACS 2020-24)

2020 - 2024

GROWING FOREIGN BORN POPULATION

INCREASING LANGUAGE DIVERSITY



GROWING DIVERSITY

Hispanic/Latino population has grown by 47%, vs state at 37%

Black/African American population growth is up by 14%, well above the state's 3%

**ESSEX COUNTY IS
MAKING STEADY
PROGRESS**



YOUTH

88% to 89%

HS Graduation Rate
2024 to 2025

16% to 12%

Children in Poverty
2010-2014 to 2020-24

4.6% to 2.7%

Children with Elevated
Blood Lead Levels
2010 to 2024 rate/1000

impactessexcounty.org/education/high-school-cohort-graduation-rate



HEALTH

5% Higher

Than State & Nation: Women
receiving 1st trimester prenatal care

6.0% to 4.0%

People without health insurance
2014 to 2023

impactessexcounty.org/health



ECONOMY

Growth Sector

Financial services is fastest
growing & highest paying

5.7% to 4.6%

Unemployment rate
2021 to 2024

+200% Growth

Hispanic/Latino Businesses
Since 2017

impactessexcounty.org/economy-and-workforce

**THE RISING COST OF LIVING
IS CREATING REAL
PRESSURE**

AFFORDABILITY



COST OF LIVING

34% (+/- 282,000) are below the living wage

\$154,000

Living wage for a family of 4 with 2 earners

\$619,100

Median home value in EC is higher than MA and US

39%

Income EC renters spend on housing

29%

Increase in out-of-pocket healthcare spend (2019-2023)



SALARY GROWTH

Slower than state & US since 2010

6%

ESSEX COUNTY

16%

STATE

12%

US

**FOOD INSECURITY IS
ACCELERATING
AND IMPACTING MORE OF OUR
COMMUNITY**

FOOD INSECURITY

43%

Households experienced food insecurity (2025)*

37%

Children food insecure

62%

Hispanic/Latino households in MA food insecure (2024)



SNAP BENEFITS

17%

Households received SNAP benefits

45%
Lawrence

29%

Lynn



DISTRIBUTION

8%

Increase in charitable food distribution in single year* (Lower Essex County)

44%

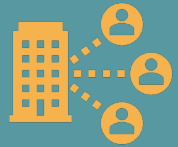
Families accessing food pantries are led by single mothers (The Open Door)



**PEOPLE NEED ACCESSIBLE
CAREER PATHWAYS TO
ECONOMIC MOBILITY
& WEALTH BUILDING**



4.6%
Unemployment



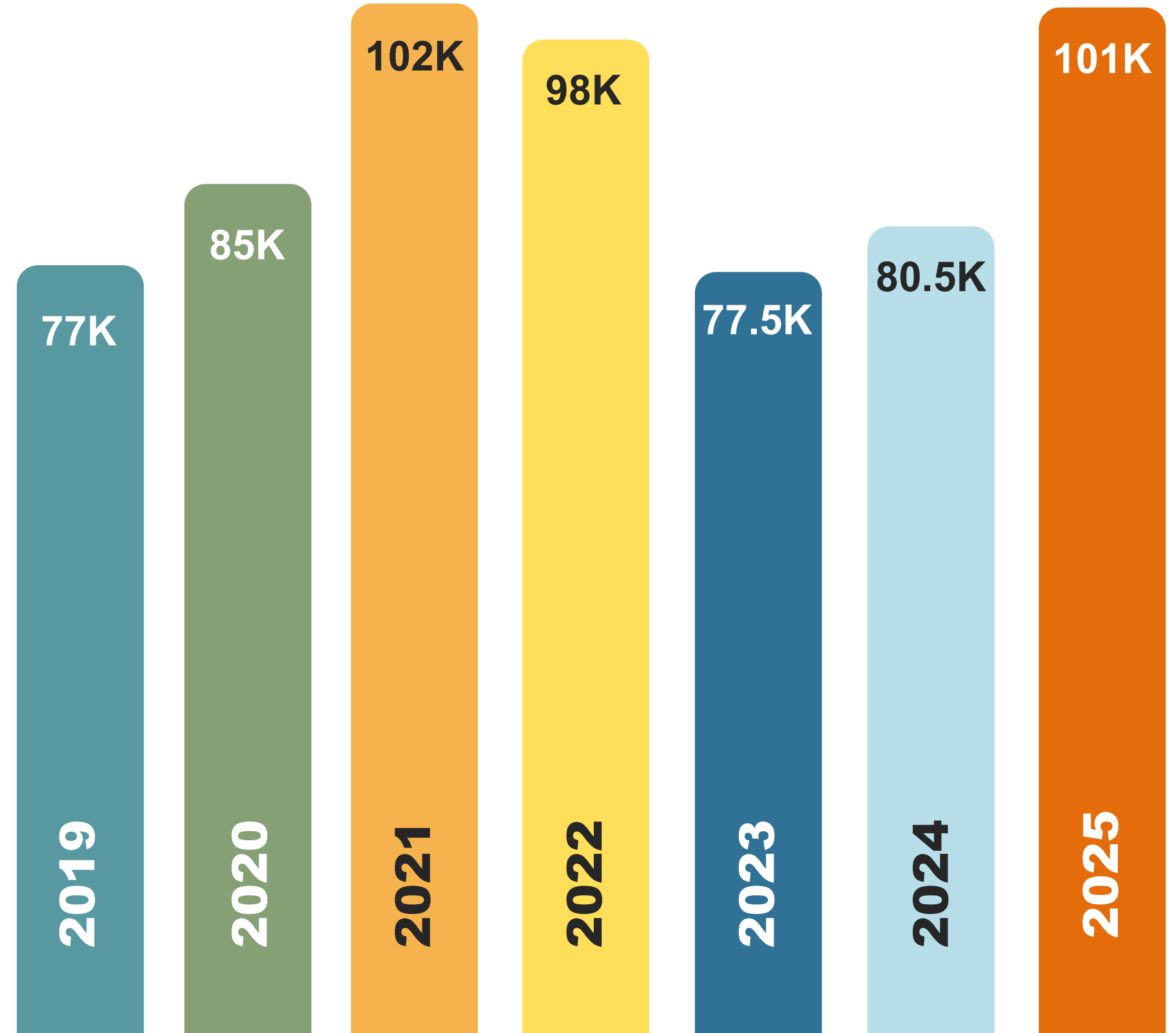
66%*
Workforce participation



6%
Salary growth

25%
Increase Since 2024
Largest Sectors:
Healthcare
Education
Manufacturing
Trades

TOTAL JOB POSTINGS IN ESSEX COUNTY



**MassHire North Shore Workforce Board data*

ADULTS WITH BACHELOR'S DEGREES

43%
Adults

14% and 21%
Lawrence and Lynn

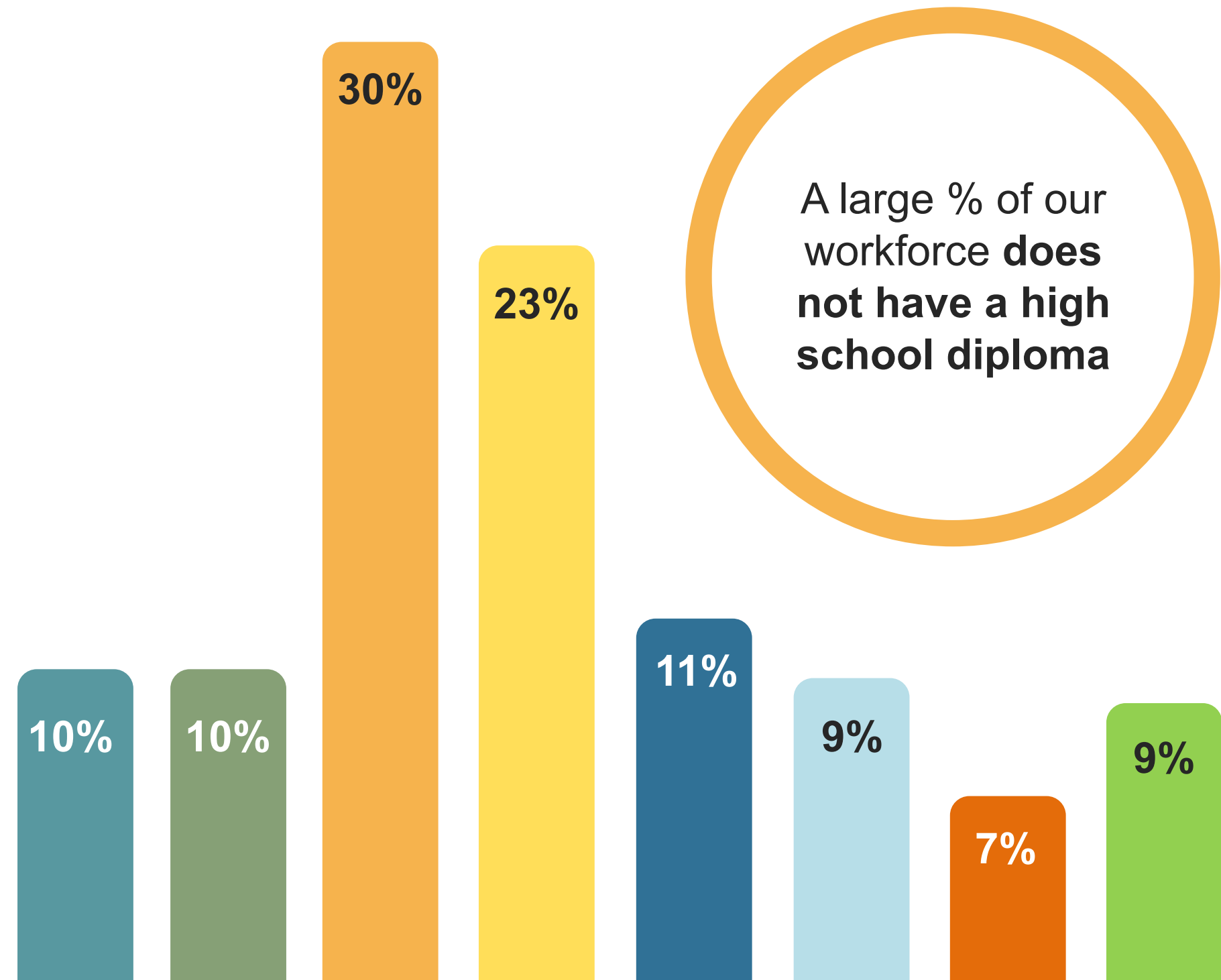
15%
Hispanic/Latino



- ESSEX COUNTY
- HAVERHILL
- LAWRENCE
- LYNN
- METHUEN
- PEABODY
- SALEM
- MASSACHUSETTS

EDUCATION LEVELS OF ADULTS

LESS THAN HIGH SCHOOL DIPLOMA 2020-24



**BUILDING FOR OUR FUTURE
TOGETHER**