



2019 ANNUAL REPORT

Systems Philanthropy:
Partnerships for Long-Lasting Change



ESSEX COUNTY COMMUNITY FOUNDATION



ECCF at a Glance

AS OF FISCAL YEAR END, JUNE 30, 2019

221

FUNDS UNDER
MANAGEMENT

\$24.6M

GRANTED*

*includes gifts dispersed
from funds established in
support of the Merrimack
Valley gas crisis.

1288

GRANTS &
SCHOLARSHIPS
TO WORTHY
NONPROFITS

\$91M

IN MANAGED
CHARITABLE
ASSETS

ECCF Mission

ECCF's mission is to inspire philanthropy that strengthens the communities of Essex County. We do this by managing charitable assets, strengthening and supporting nonprofits and engaging in strategic community leadership.

ECCF Vision

Essex County thrives when we have:

- ♥ Successful schools and students
- ♥ Safe, clean and green neighborhoods
- ♥ Strong job and economic opportunities
- ♥ Vibrant arts and culture experiences
- ♥ Healthy people

Partnerships for Long-Lasting Change

Systems Philanthropy. Making change happen.

In our 34 cities and towns, arts and culture are being woven into the fabric of our communities, bringing people together and creating opportunities for all to benefit from the transformative power of art.

In the Merrimack Valley, a coalition of nonprofit organizations, funders, state agencies, banks and volunteers have come together to help businesses recover from the devastating September 13, 2018 gas explosions.

Across Essex County, a financial coaching and literacy initiative is being integrated into the existing adult programming of the region's five Community Action agencies, helping residents living below the living wage to make informed financial decisions and strengthen their financial condition.

How?

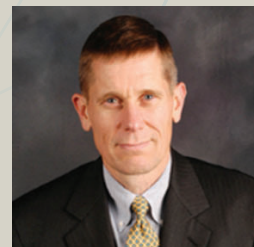
It's called Systems Philanthropy. And it's Essex County Community Foundation's approach to solving some of the most complex social issues facing us today. It's built on the premise that lasting, population-level change is best achieved when we identify root causes, engage the community, collaborate across sectors and invest larger philanthropic resources over a longer period of time.

This innovative approach to social change has been a careful and guided evolution based on ECCF's long history of community-centered work, one that is embedded in our new strategic plan.

Systems philanthropy is a true partnership, one that comes together around a common goal. One that recognizes that there is no one person, no one nonprofit and no one government agency that can do it alone. We must all be invested in the outcome. We have to connect the dots so that our solutions to the problems that impede the highest quality of life are holistic and long-lasting. This is what Systems Philanthropy can do. This is what we can do – together.

In the pages of this annual report, you'll learn how ECCF's systems approach has expanded our reach, strengthened our connections and supported our communities.

Read more and learn how you can join us at eccf.org.



JON PAYSON
Chair of the Board



BETH FRANCIS
President & CEO

Community Leadership

THE CREATIVE COUNTY INITIATIVE

ECCF'S CREATIVE COUNTY, our partnership with the Barr Foundation to strengthen art, culture and creativity in Essex County, is energizing the region's creative sector by connecting donors, policymakers and local businesses with artists and art organizations whose work enriches Essex County.

IN 2019, THE CREATIVE COUNTY INITIATIVE:

Awarded \$300,000 in grants for 12 public art and creative placemaking projects across Essex County, all of which answered ECCF's call for cross-sector collaboration, a necessary component for transformational, community-based work.

Hosted four sub-regional cultural planning labs - bringing together stakeholders invested in embedding arts and culture into community development, in conjunction with the Metropolitan Area Planning Council and the Merrimack Valley Planning Commission.

Launched EssexCountyCreates.org - a comprehensive website and event calendar that connects all those invested and interested in the creative sector at one central hub. ❤️

For more information, visit eccf.org/creative-county.

CULTURAL PLANNING LABS



125+
PARTICIPANTS

30 COMMUNITIES
convened to discuss and support the arts and culture ecosystem

**Collaboration,
investment and
partnership** defined the
year in Essex County's
creative sector.

ESSEXCOUNTYCREATES.ORG



2000+
ARTS & CULTURE
EVENTS
POSTED

And **300+**
ARTISTS, VENUES
and **ARTS**
ORGANIZATIONS
registered to date

CREATIVE COUNTY INITIATIVE STEERING COMMITTEE

KAREN RISTUBEN

Program Director, Creative County Initiative

JOHN ANDREWS

Creative Collective, LLC

ELENA BACHRACH

Development Manager, MASSCreative

DIANNE BRAND

Financial Planner,
The Financial Advisors, LLC

ANA COLMENERO

Trustee, Peabody Essex Museum

JUDITH FARZAN

Board Chair, Essex Arts Center

GREG FEDERSPIEL

Town Administrator,
Manchester-by-the-Sea

DEBORAH GREEL

Public Art Planner, City of Salem (retired)

LILLIAN HSU

Public Art Director, City of Cambridge

STEVE IMMERMANN

President, Montserrat College of Art
(retired)

SARAH JACKSON

President, Sarah J Consulting

KATIE KING

Principal, K2 Consulting

NOAH KORETZ

Director of Transformative Development,
MassDevelopment

KATE LUCHINI

Arts & Art Strategy Consultant

PEDRO MIGUEL SOTO

Associate Director, Beyond Walls

JEAN NICHOLS

Biotechnology Executive, (retired)

JACKIE ROSENTHAL

Community Volunteer

J. CASEY SOWARD

Executive Director, The Cabot

ROSARIO UBIERA-MINAYA

Executive Director, Amplify Latinx

JENNIFER WELTER

Town of Lynnfield,
Planning & Conservation Commission

Community Leadership



In 2019 ECCF invested more than \$300,000 in 12 collaborative art and culture projects across Essex County.



BY SKIFF AND BASKET: CLAMMING IN ESSEX highlighted Essex's clamming history by collecting oral histories of Essex boat-builders and offering basket-making workshops for the community, and culminated with the launch of a clamming skiff built by students.

– Essex Historical Society and Shipbuilding Museum



IM MIGRATION, a collaborative public art initiative that celebrated the immigrant population of Salem's Point Neighborhood through light and sound.

– North Shore CDC / Punto Urban Art Museum



DRAWING FROM OUR PAST: TRI-TOWN TAPE ART FESTIVAL, a community tape art project that engaged, united and strengthened the art sector of the Pentucket communities of Groveland, Merrimac and West Newbury.

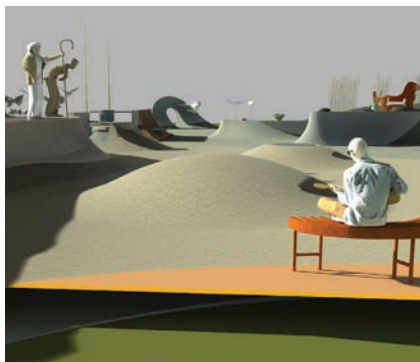
– Pentucket Arts Foundation



PATIO: A PUBLIC PARKLETS

PROGRAM, a collection of four mobile, transformable parklets designed to activate underutilized spaces, improve public safety, and engender public discourse at various locations in downtown Lynn.

– Neighborhood Development Associates / Beyond Walls



THE SWITCH RIDEABLE ARTSCAPE,

a fine art sculpture and skate park that will serve as a space for public creativity, designed and constructed by young artist-fabricators on town-owned land in Ipswich.

–Sculpture in Open Spaces



CURIOSCITY: A POP-UP CHILDREN'S

MUSEUM, an interactive museum of art and industry for families and children – slated to become permanent – located in downtown Peabody.

– Peabody Cultural Collaborative



CROSSING WATER: OVER, ON AND UNDER THE BEVERLY-SALEM BRIDGE,

a weeklong festival under the Beverly-Salem bridge that included innovative lighting, performances and public art that connected the two communities.

– Montserrat College of Art



TRANSFORMING THE CABOT WITH MURALS,

a collaboration with Beyond Walls, was an installation of murals that has enhanced the visibility of The Cabot and downtown Beverly as a cultural destination.

– The Cabot



NEWBURYPORT ARTS AND CULTURE SHANTY PROGRAM

provided colorful shanties for artists, writers and performers to produce and present work on the Newburyport waterfront.

– Firehouse Center for the Arts



SHARING THE ORIGINAL CULTURE OF ESSEX COUNTY,

an expansion of Native American pow-wows for greater engagement and cultural understanding.

– Massachusetts Center for Native American Awareness, Inc.



CO-CREATING CULTURE, a public art installation at the Lawrence Public Library to celebrate the diverse cultures of Lawrence over time.

– Elevated Thought




ILUMINACIÓN LAWRENCE, a public-private partnership to light up important landmarks across the city of Lawrence with colorful LED lights and projections.

– Groundwork Lawrence

Community Leadership

THE GREATER LAWRENCE DISASTER RELIEF FUND



6,887 Donors
contributed
to the Greater
Lawrence Disaster
Relief Fund



10,000
Estimated Households
and Businesses
Supported

\$12.6M
Total Raised and
Awarded as of
June 30, 2019

300
Volunteers
Supported
the GLDRF

17,000+
Individual
Stipend Gifts
Awarded

It was only hours after gas explosions and fires tore through the communities of Lawrence, Andover and North Andover on September 13, 2018 that a plan to help the thousands of people impacted began to take shape.

It started with the activation of ECCF's **Lawrence Emergency Fund**, founded by a group of donors a decade before to provide aid to Lawrence residents faced with disaster. It was an immediate and easy way for ECCF to harness the

heartfelt generosity of people from across Essex County – and the nation – looking for a way to help.

What unfolded in the following days, weeks and months was nothing short of miraculous: a system of support rooted in philanthropy, sustained by collaboration and guided by a common goal. A new ECCF fund – the **Greater Lawrence Disaster Relief Fund** – was established. And donors, nonprofit organizations, state and municipal

leaders, government agencies and volunteers each played a critical role in the complex delivery system that ultimately provided more than \$12.6 million of aid to over 10,000 households, plus additional social services to more than 1,500 families.

Most importantly, we came together to show the people of Lawrence, Andover and North Andover that they were not alone in their time of greatest need. ♥



GREATER LAWRENCE DISASTER RELIEF FUND ADVISORS

This group of passionate individuals gave countless hours and thoughtful guidance on the delivery of contributed resources to affected individuals, families, and businesses.

- Francisco Brea
- Benny Espaillat
- Frank Kenneally
- Christine Packard
- Dick Sumberg
- Tim Vaill
- Kendrys Vasquez

OUR NONPROFIT AND MUNICIPAL PARTNERS

An effort like this could not have happened without the dedicated network of social service providers in all three communities.

Lead Nonprofits:

- Greater Lawrence Community Action Council
- Groundwork Lawrence
- Lawrence Senior Center (The Center)

Additional Nonprofits and Partners:

- City of Lawrence
- Community Day Charter School
- Elder Services of the Merrimack Valley
- Family Services of the Merrimack Valley
- Lawrence Community Works
- Lazarus House
- Town of Andover
- Town of North Andover
- Merrimack Valley YMCA



Community Leadership

MERRIMACK VALLEY BUSINESS RELIEF



A broad coalition, including ECCF, came together quickly and organically to align resources, develop strategies and work collectively to implement solutions for the more than 850 businesses that were directly affected – and the hundreds more indirectly impacted – by the Sept. 13, 2018 gas explosions.

While impacted residents were struggling to get through each day, many small businesses were forced to close. And resident customers who had to leave their homes stopped shopping locally - many changing their buying habits permanently.

The primary goal of the Coalition was to get all impacted businesses what they needed to reopen. But it wasn't just about returning to business as usual. A strategic and collaborative plan was put into place to first stabilize those impacted, and then create resiliency and growth in the region.

Through the Coalition's advocacy, Columbia Gas provided \$10 million in three distinct funds, which together, support the framework put in place to accomplish these goals. ♥

- 1 **\$2 million Acute Fund** to address immediate needs
- 2 **\$6 million Municipal Fund**, divided equally among the three communities, to use for **short- and long-term economic recovery priorities**
- 3 **\$2 million Innovation Fund** set up to help establish **long-term regional business resiliency**

"Small businesses are not faint at heart, we are not easily defeated; we're knocked down; but we're not out."

– Kellee Twadelle, owner,
Rose & Dove, North Andover





GETTING BACK TO BUSINESS

Acute Funding Ensures Every Impacted Business Has the Opportunity to Fully Recover

Following nearly 2,000 phone calls and site visits, the Coalition gained a strong understanding of the challenges and obstacles small businesses were facing. Then, they built a strategy to help them stabilize impacted businesses, which needed capital, technical assistance and other services to return to pre-crisis operations.

Key outcomes:

- Ongoing outreach to impacted businesses over 12 months
- Helped small businesses secure \$400,000 in 0% interest emergency loans through MCCI, with local and state support
- Provided technical assistance through more than 30 hiring, accounting and marketing workshops to hundreds of businesses
- Connected affected businesses with additional technical assistance through secondary referrals by EforAll/ EparaTodos
- Assisted businesses with insurance claims to Columbia Gas, resulting in an additional combined \$170,000 for more than 80 businesses
- Hired a leading Boston marketing agency to develop and manage a regional marketing campaign designed to bring business back to the Merrimack Valley. Rock the Register was launched in FY2020. For more information visit rocktheregister.com ♥

LONG-TERM RESILIENCY

Innovation Funding Fosters Growth and Resiliency

The Coalition will continue to support stabilization efforts for impacted businesses, but it will also focus on building long-term resiliency and growth for all businesses.

Ongoing stabilization and resiliency efforts:

- Collecting research from other regions that have faced natural disasters to inform a regional economic development plan
- Launching a permanent regional micro loan fund for non-bankable businesses
- Providing additional accounting and bookkeeping workshops
- Designing and implementing Business Continuity and Disaster Planning programming in each municipality
- Launching an intensive accelerator initiative in partnership with EforAll
- Continued support for navigating the claims process
- The establishment of a regional economic development entity to promote long-term vitality in each of the 3 communities ♥

COALITION MEMBERS:

City of Lawrence
 Towns of Andover and North Andover
 Essex County Community Foundation
 Lawrence Partnership
 EforAll/EparaTodos
 Mill Cities Community Investments
 Merrimack Valley Workforce Investment Board / MassHire
 Massachusetts Growth Capital Corporation
 Assistance from state and federal delegations

INNOVATION FUND STEERING COMMITTEE:

Larry Andrews	Christina Minicucci
Wendy Estrella	Derek Mitchell
Stratton Lloyd	Deneven O'Connell
Alex Mercedes	Timothy Vail

Community Leadership

EMPOWERING ECONOMIC OPPORTUNITY

\$1.3M

**MULTI-YEAR
COMMITMENT**



In FY19, ECCF launched its Impact Essex County Alpha Project: Empowering Economic Opportunity, addressing the issue of Income Inequality in our region.

Over 200 people gathered at Wiggin Auditorium at Peabody City Hall on Feb. 26, 2019 for the launch of ECCF's Empowering Economic Opportunity initiative.

EMPOWERING ECONOMIC OPPORTUNITY (EEO) is ECCF's systems solution to equip thousands of residents living below the living wage with knowledge, tools and opportunities to make economic gains for themselves and their families.

With a multi-year, \$1.3 million commitment, ECCF is partnering with and investing in local collaborations already delivering successful programming. By scaling and amplifying their efforts, we will create long-term strength in our region.

EEO INVESTMENT AREAS:

FINANCIAL COACHING AND LITERACY

This program unites Essex County's five Community Action Agencies in a coalition focused on financial literacy empowerment, one-on-one coaching, developing a community of practice and forming joint service delivery partnerships.

CREDIT FOR PRIOR LEARNING

Building on the nationally renowned North Shore Community College Program, this solution enables adult learners to translate their specialized experience and skills into college credits, reducing costs and time to graduate. Launched with ECCF funding in collaboration with several higher education institutions and several community based organizations, this initiative will ultimately service thousands of local students.

“We want to uncover the root causes of income inequality in our region to make lasting change. The Foundation is not inventing new programs or making the rules. Our systems approach is community defined, not Foundation defined.”

– Stratton Lloyd, ECCF COO and Vice President for Community Leadership

SMALL BUSINESS RESILIENCY AND VENTURE FUND

This project expands a successful commercial lending program in Lawrence for non-bankable small businesses, offering micro-loans supplemented by technical support.

ESSEX COUNTY THINK LABS

ECCF will use its ability to convene key stakeholders and attract experts around special areas of focus at several Think Labs. These Labs will leverage local expertise to inspire creative thinking that can impact the economic landscape.

Together, these four programs will harness the power of collaboration to create population-level change in Essex County. ❤️

For more information, visit eccf.org/EEO.



IMPACT ESSEX COUNTY

Impact Essex County is ECCF's lasting commitment to addressing our most pressing issues, for today and for generations to come.

The work of Impact Essex County is:

DATA-DRIVEN

ECCF's data website, ImpactEssexCounty.org, identifies the strengths and challenges in our region.

100+
DATA
INDICATORS

COLLABORATIVE

ECCF's convening power harnesses the collective knowledge of our county's public officials, nonprofit leaders and community advisors.

50+
ORGANIZATIONS
ENGAGED

SUSTAINABLE

ECCF has the resources to make lasting social change happen in Essex County with the support of engaged local philanthropists and the community.

\$10M
ENDOWMENT
CAMPAIGN

For more information, visit eccf.org/impact-essex-county.

Strengthening and Supporting Nonprofits



“I attend a lot of conferences, and none of them are as well-organized or well-staffed as the Institute for Trustees.”
– David Orlinoff, principal of Concord Financial Organization, 2019 IFT presenter and attendee



ECCF'S 2019 INSTITUTE FOR TRUSTEES

This year marked the 10th anniversary of ECCF's Institute for Trustees, the region's premier leadership conference for nonprofit board members and executive directors.

On March 9, 2019, more than 300 nonprofit leaders gathered at the Pingree School for this year's event. In addition to keynote speaker Dr. Patti Fletcher – who spoke about unconscious bias – and more than 20 workshops on board development, financial sustainability, strategic planning and more, ECCF introduced BoardCONNECT, a new way to connect nonprofit organizations looking to expand their boards with passionate individuals who want to make a difference. ❤️

For more information, visit eccf.org/IFT and eccf.org/BoardConnect.

A SAMPLE OF 2019 WORKSHOPS:

- Fundraising: A Major Gifts Intensive
- From Start-Up to Stable – Ensuring Healthy Growth and a Robust Future
- Deeper than Racial Diversity – The Journey to Inclusion and Equity
- Generational Giving – Similarities and Differences

COMMUNITY LUNCH & LEARNS

ECCF is committed to inspiring philanthropy by creating a connected system of local nonprofit organizations and people interested in learning about the good work these nonprofits are doing in our communities.

In 2019, our Community Lunch & Learns highlighted seven nonprofit organizations in Lawrence and Salem that are working hard every day to create a better quality of life for Essex County residents.

Lunch & Learn participants had the chance to get an in-depth view of the impactful work of the featured nonprofits, as well as to ask questions and learn some history of the communities they were visiting during a bus tour. ❤️

FY19 LUNCH & LEARNS

LAWRENCE Aug. 3, 2018

Lawrence Community Works
Groundwork Lawrence
The Lawrence Partnership
Beyond Soccer


SALEM April 24, 2019

Salem Pantry Collaborative
Root North Shore
Salem Y Greenspace



Strengthening and Supporting Nonprofit

GREAT GRANTS



Through thoughtful grantmaking and the mindful philanthropy of our donor advised fundholders, ECCF is working to improve the lives of Essex County residents every day.

Here are just a few examples from FY19...

ARTS & CULTURE

Bread & Roses Heritage Committee, to support the 2019 Bread and Roses Heritage Festival, an annual celebration honoring the memory of the great Lawrence textile workers' strike of 1912, popularly known as the "Bread and Roses Strike."

Rosman Reserve Fund

The Musar, JRP, Inc., to purchase new musical equipment for a unique lending program that provides access to instruments and instructors to those interested in playing.

Isabella Rose Marino Charitable Fund

North Shore Community Development, Inc., to support Voices of our Past; Faces of our Future a collaborative public art initiative at Punto Urban Art Museum that celebrated the immigrant population of Salem's Point Neighborhood.

Creative County Initiative

EDUCATION & YOUTH DEVELOPMENT

Girls Who Code, Inc., supports building a pipeline of female engineers through learning opportunities, career development and peer support for elementary, middle and high school aged girls.

Nelson - O'Neil Charitable Fund

Root NS, Inc., to provide youth ages 16 to 24 with a pathway to employment and financial independence through culinary and food service training.

ASD Fund

Si, Se Puede, for Project Away, a summer program that engages young people from low-income families in Lawrence through learning and enrichment experiences that focus on community building, respect for differences and cooperation.

Greater Lawrence Summer Fund

ENVIRONMENT

Merrimack River Watershed Council, to support the conservation and improvement of the Merrimack River watershed.

ESI Grantmaking Fund

Change Is Simple, Inc., to support a mobile STEM program for elementary and middle-school students that teaches them how our daily actions leave an impact on our world.

S.E.A Fund

Essex County Greenbelt Association, to support the acquisition and conservation of Castle Neck River Reservation in Ipswich.

David Tory Fund

FOOD SECURITY & HOUSING

The Open Door, to support The Big Chill, an update to the Gloucester food pantry refrigeration system.

Hunger and Homelessness Fund

Lifebridge, Inc., to support the most urgent needs of the homeless and under-housed in three locations on the North Shore.

The Ansara Fund

Merrimack Valley Habitat for Humanity, to support the opportunity of home ownership for economically disadvantaged families in Merrimack Valley communities.

Sumberg Family Fund

HEALTH AND WELL-BEING

Brigham and Women's Hospital, to support pioneering breakthroughs in medicine that help people around the world.

Dusky Fund

Lynnfield Substance Abuse Prevention Coalition, for Interface, a helpline designed to assist residents of Lynnfield with access to outpatient mental health providers.

North Shore Community Health Network

Lawrence General Hospital, to support compassionate and quality health care for the whole family.

The Lupoli Family Fund

HUMAN & SOCIAL SERVICES

Wellspring House Inc., to support families and adults in achieving employment and financial security through stable housing, education, job training and career readiness.

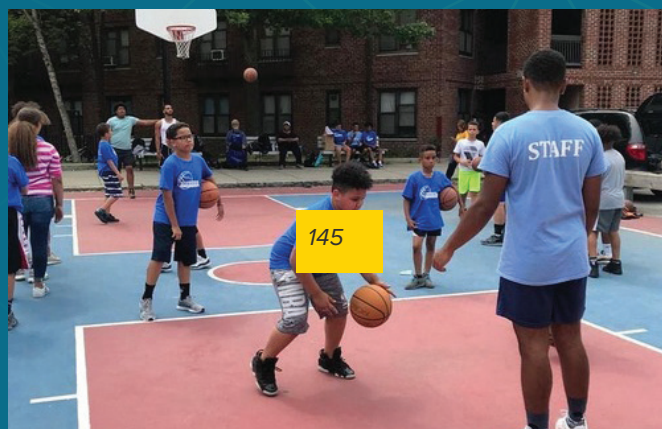
Langille Family Fund

Plummer Youth Promise, to help vulnerable teens – many of whom will age out of the Foster Care system with nowhere to go – connect with permanent families, build community connections and gain life skills.

The Brand Fund

Harvey Girls, to support Debbie's Treasure Chest – which provides aid and support for disadvantaged families in the Merrimack Valley – and the charitable work of the organization's SPS youth leaders.

Charity Girls NEMA



In FY19,
1288 grants totaling
more than **\$24.6M**
were awarded*

* In response to the Merrimack Valley gas crisis, several funds were established at ECCF to support those impacted. Together, these funds delivered critical relief totaling \$16.8M to thousands of households and businesses.

- Andover Business & Economic Development Fund
- Greater Lawrence Disaster Relief Fund*
- Lawrence Business & Economic Development Fund
- Merrimack Valley Business Emergency Fund
- North Andover Business & Economic Development Fund

*includes sub-funds

Inspiring Philanthropy

CELEBRATING PHILANTHROPY IN ESSEX COUNTY



HONORING THE PEOPLE AND ORGANIZATIONS THAT MAKE CHANGE HAPPEN

“We look forward to this event each year,” said ECCF Board Chair Jon Payson. “Not only is it an opportunity for us to honor great people making a difference in the County, but it’s also a day for all of us to come together and celebrate the impact giving makes in all our lives.”

On May 2, 2019, at its 6th annual Celebration of Giving, ECCF honored the people and organizations that work collaboratively to impact the quality of life in Essex County.

The event was held at the DoubleTree in Danvers with a record 575 guests.

The theme of the morning – Unity in Community – was chosen to honor the Greater Lawrence Disaster Relief efforts and the collaborative work by many to support the thousands of individuals, families and businesses affected by the Sept. 13, 2018 gas crisis.

The 2019 George Peabody Award for outstanding philanthropy in Essex County was given to the 6,887 donors to ECCF’s Greater

Lawrence Disaster Relief Fund, who collectively raised \$12.6 million to support those affected. Governor Charlie Baker accepted the award on behalf of the donors.

Dianne Brand of The Financial Advisors in Andover was the recipient of ECCF’s 2019 Professional Advisor Award. In addition to being committed to the needs of her clients, Brand, a member of ECCF’s Professional Advisors Committee and Creative County Initiative Steering Committee, is also a Plummer Youth Promise foster parent, raises money for cancer research and donates to many causes in our region. ❤️

For more information, visit eccf.org/celebration



NEXTGEN PHILANTHROPY INITIATIVE

Dr. Wendy Mogel discusses the values that can echo throughout our kids' philanthropic lives

On Jan. 17, 2019, ECCF's NextGen Philanthropy Initiative and Shore Country Day School hosted Dr. Wendy Mogel, a renowned psychologist and New York Times best-selling author who has written extensively on raising thoughtful and self-reliant children.

With her signature humor and honesty, Dr. Mogel delivered her advice about anxiety and the age of entitlement to resounding laughter throughout the Trustey Family Theatre at Shore. The event, attended by more than 200 people, was the third time ECCF and Shore have partnered to bring Essex County dynamic speakers that are relevant to the education and philanthropy communities.

"Dr. Mogel's presentation really tied into the goals of ECCF's NextGen Philanthropy Initiative, which aims to engage future generations of philanthropic leaders," said Beth Francis. "Her discussion was relevant to the larger context of the place our kids have in the world. Their ability to make decisions with confidence and compassion will echo throughout everything they do in life, including in how they choose to give back." ♥

NEXTGEN COMMITTEE

Liz Bradley, Swampscott	Elizabeth (Weze) Harrigan, Wenham	Michelle Langille, Manchester	Chrissy Cahill, Manchester
Sarah Gadipatti, Salem	Katy Langhorst, Beverly	Patrick McCoy, Newburyport	Derek Reed, Wenham



2ND ANNUAL FUNDERS SUMMIT CONVENES LOCAL PHILANTHROPISTS

Summit focuses on the intersection of education and social issues

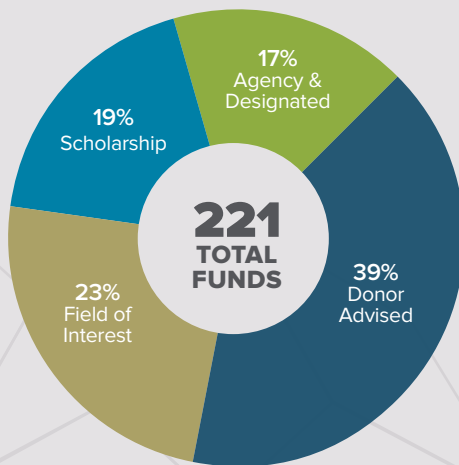
On May 14, 2019, nearly 50 area funders gathered at Danversport to join ECCF, the Peter and Elizabeth C. Tower Foundation, and Philanthropy Massachusetts for the 2nd Annual Funders Summit.

This year's summit focused on the topic of education and its intersection with other social issues. Attendees had the opportunity to join in a discussion grounded in education-related data from ImpactEssexCounty.org, ECCF's data website tracking the health of Essex County. They also learned about existing and prospective funding efforts in the region and explore opportunities to co-fund initiatives and work together to improve the quality of life in Essex County. ♥

Managing Charitable Assets

Essex County Community Foundation is home to 221 funds that support a wide array of philanthropic interests.

FY19 FUNDS UNDER MANAGEMENT



DONOR ADVISED FUNDS

Individual or corporate-advised giving

FIELD OF INTEREST FUNDS

Committee advised giving in support of a specific area of interest

AGENCY AND DESIGNATED FUNDS

Giving in support of a specific nonprofit or nonprofit cause

SCHOLARSHIP FUNDS

Committee-advised giving in support of students

MANAGING CHARITABLE FUNDS

0219 Fund	Brendan Tobin Memorial Fund	ECCF Real Estate LLC*
1115 Fund	Bruce Arnold Scholarship Fund	Edna Stocker Trust Fund
82491 Fund	Build A Bridge Scholarship Fund	Ellis Steinmetz Family Fund
ACAC Fund	CCS Fund	Emergency Fund
Alacoque-Weber Trust Fund for Catholic Schools	Centerville Improvement Society	Ernest J. Perry, Jr. Scholarship Fund
Albert Lunt Trust for Charity Fund	Charity Girls NEMA	ESI Grantmaking Fund
Alice M. Hornsey Fund	Chet and Will Griswold Suicide Prevention Fund	ESI Reserve Fund
AllBlue Foundation Fund	Christian Angel Smile Fund	ESMV Board Designated Endowment Fund
ALMA Fund	Christine C. Price Breast Cancer Fund	Essex Art Center Founders Fund in Recognition of Leslie Costello & Helen Tory
Amanda P. Craig Fund	Clark Smith Fund	Essex County Forum Fund
Amesbury Carriage Museum Fund	Cloven Rock Fund	Evelyn Lilly Lutz Foundation
Andover Business & Economic Development*	Colleen Ritzer Scholarship Fund	Farnsworth Fund
Andover Coalition for Education Fund	Colucci Family Charitable Fund	Fink Family Fund
Andrews Chapel Restoration Fund	Community Giving Tree General Fund	First Jobs Fund
Anita Pacione	Corinne (Morris) Johnson Scholarship Fund	Francis Family Fund
Evetts Shine on Scholarship	Cove Hill Fund	Friends of Andover Tennis
Ansara Fund for Essex County	Creative County Initiative Fund	Friends of Anne Bradstreet
Arthur L. Flynn Education Trust Fund	CST Science Scholarship	Friends of LCA Capital Campaign Fund
ASD Fund	D&P Gleason Charitable Fund	Fund for Essex County Excellence
Astle-Tory Broadhow Fund	David & Mary R. Dearborn Fund	Fund for Essex County Excellence Reserve
Ayer Mill Clock Tower Endowment Fund	David Tory Fund	Fund for Lawrence Public Schools
Barbara H. Almy Fund	David Welbourn Fund for Innovation & Collaboration	Gabriel Pacione Memorial Scholarship Fund*
Barr Learning Journeys*	Davis Trust Fund	Gates-Robertson Fund
Beauport Financial's Richard D. Wilson Community Response Gift Fund	Dee and Kingman Webster Legacy Fund for Greater Lawrence	George H. Carleton Fund
Beyond Scholarship Fund	Ditchfield Scholarship Fund	George McQuinn Memorial Foundation
Bishop Family Fund	Driftwood Fund*	
Bluefin Blowout*	Dusky Fund	
Brand Fund	Eamon O'Holleran Fund	

Giangrande Family Scholarship Fund
 Gloucester Maritime Heritage Center Fund
 GNAR Fund
 Goodwin Wragg Land Stewardship Endowment
 Grace K. Babson Trust Fund
 Greater Lawrence Community Fund
 Greater Lawrence Disaster Relief Fund*
 Greater Lawrence Disaster Relief Fund Administration*
 Greater Lawrence Disaster Relief Fund Columbia Gas*
 Greater Lawrence Summer Fund
 Gregory & Deborah Schmidt Charitable Fund
 Hallowell Good Kids Fund
 Hamilton-Wenham Friends of the Arts
 Harborlight-Stoneridge Biolabs Scholarship
 Harborlight-Stoneridge Endowment Fund
 Helen & David Tory Fund
 Help in the Nick of Time
 Henry Giannantonio Trust Fund
 Hunger and Homelessness*
 Hunger Initiative
 Ideale and Florence Migliori Memorial Scholarship Fund*
 Impact Essex County Endowment Fund
 Impact Essex County: Empowering Economic Opportunity*
 Inspire to Act Fund
 Isabella Rose Marino Charitable Fund
 James Family Scholarship Fund*
 James H. Boynton Scholarship Fund*
 JCH Fund
 JEOL Families Scholarship Fund
 Jodoin Fund
 John T. Schroeder Memorial Scholarship
 John W. Peirce Fund
 John Welch Productions*
 Joseph R. and Margaret M. Doherty Memorial Fund

Josh Quince Fund for Adolescent Services
 JT ECCF Fund
 JTS Memorial Fund
 Junior Board - Massachusetts
 Kenneth Waldie Memorial Fund
 Knapp Family Fund
 Koumarios Family Fund
 Krueger Family Fund
 Lawrence Business & Economic Development*
 Lawrence Development Fund
 Lawrence Emergency Fund
 Lawrence High School Alumni Association Grant Distribution Fund
 Lawrence High School Alumni Association
 Lawrence Public Schools College & Career
 Link House, Inc.
 Lois W. Smith Endowment Fund
 Lupoli Family Fund
 LWAG Charitable Foundation*
 Madden Family Fund*
 MADLMU Fund
 Margaret Voss Howard Teacher Recognition Award Fund
 Maria Cusumano Scholarship*
 Mary H. Paolino Scholarship
 Mary R. Dearborn Donor Advised Fund
 McCoy Family Fund
 McKenna Family Fund
 Merck-Evarts Fund
 Merrimack Valley Business Emergency Fund*
 Merrimack Valley Habitat for Humanity
 Michael Erikson Memorial Scholarship Fund
 Michael J. Latta EMT Scholarship Fund
 Mount Blue Fund
 Music Fund
 Myopia Hunt Club Caddie Scholarship Fund
 Nancamp Fund
 Nathaniel Bowditch Fund
 National Lancers' Guard Anniversary Fund

Nelson - O'Neil Charitable Fund*
 Niben Point Fund
 Nicole Lemieux Knight Scholarship Fund
 North Andover Business & Economic Development Fund*
 North Shore Community Health Network
 North Shore Technology Council Scholarship
 Ocean River Institute Fund
 One Run for Boston Fund
 Patricia Foley Karl Scholarship Endowment
 PAWS Project Foundation
 Peggy Corbett Memorial Fund
 Pelican Intervention Fund
 Peter and Kathleen Van Demark Fund
 Peter B. Seamans Fund
 Peter N. Stavru and Angelo Stavru Scholarship Fund
 Peter Watson Memorial Scholarship
 Pritchard Fund
 Quentin Steele Trust Fund
 R.J. Weggel Fund for the Friends of The Middlesex Fells Reservation
 Rawlins Family Fund
 Reid R. Sacco AYA Cancer Fund
 Reid R. Sacco Memorial Scholarship Fund
 Resiliency and Innovation Fund for Merrimack Valley
 Richard J. Collins Memorial Scholarship
 Rick Starkweather Scholarship Fund
 Rockport Millbrook Meadow Fund
 Rosman Family Fund
 Rullo Family Donor Advised Fund
 Rullo Family Scholarship Fund
 Ruth E. Brown Scholarship Fund
 S. W. Fund
 S.E.A. Fund
 Sam and Molly Fund
 Santa's Workshop Fund
 Season of Advent Scholarship Program Fund

Sendzimir Family Fund
 Sherry and William Rogers Family Fund
 Small Steps Fund*
 Solstice Singers Scholarship Fund
 Spark Academy Fund
 Stand for Good Fund
 Step Up for Colleen Fund
 Steven & Harriet Perlman Fund
 Stirling A. Winder Fund
 Sumberg Family Fund
 Summer Slopes Charitable Trust*
 Susan Bradbury Fund*
 T & S Fund*
 Teresa Hopper LaChance Scholarship Fund
 The Fund for the Foundation
 The Johnson Fund
 The Judith Jenkins Fund*
 The Langille Family Fund
 The Levenson Legacy Endowment Fund for the Community Giving Tree
 The O'Brien-Romano Family Fund
 The Ronald & Kathleen Argenzio Memorial*
 The Tosi Family Fund
 The von Metzsch Family Fund
 The Webster Family Legacy Fund
 Three Cool Cats
 Tia D. Andrew Family Fund
 Tia D. Andrew Fund
 Ugo and Katherine San Antonio-Marcello Fund
 VIYA Fund
 Wasserman Fund
 Webster Estate Fund
 Webster Scholarship Fund
 William P. & Elizabeth S. Dolliver Trust
 Women's Fund of Essex County
 Women's Reserve Fund
 Worden Family Foundation*
 YAR Reserve

**Fund established in FY19*

ECCF STATEMENT OF FINANCIAL POSITION

JUNE 30, 2019 AND 2018

	2019	2018
ASSETS		
Cash and cash equivalents	\$ 957,602	\$ 1,106,199
Investments	56,201,065	38,224,135
Prepaid expenses and other current assets	34,365	26,320
Total current assets	57,193,032	39,356,654
Long-term assets		
Property and equipment - net	3,953	6,717
Security deposit	5,580	5,580
Annuitized split-interest agreements	349,297	446,925
Endowment promises to give		2,358,138
Agency endowment investments	15,301,028	13,745,457
Endowment investments	18,220,585	15,207,086
Total long-term assets	33,880,443	31,769,903
Total assets	\$ 91,073,475	\$ 71,126,557
LIABILITIES AND NET ASSETS		
Current liabilities		
Accounts payable and accrued expenses	\$201,636	\$67,648
Grants payable	585,435	290,900
Deferred revenue	5,000	10,000
Total current liabilities	792,071	368,548
Long-term liabilities		
Fiscal agency liability	113,859	113,326
Split-interest obligations	349,297	446,925
Agency endowment funds	15,301,028	13,745,457
Total long-term liabilities	15,764,184	14,305,708
Total liabilities	16,556,255	14,674,256
Net assets		
Without donor restrictions		
Available for operations	56,292,682	41,238,498
Designated for endowment	12,090,470	9,170,029
Invested in property and equipment	3,953	6,717
Total without donor restrictions	68,387,105	50,415,244
With donor restrictions		
Held in perpetuity	4,924,628	4,903,413
Purpose-restricted	490,880	720,566
Time-restricted	714,607	413,078
Total with donor restrictions	6,130,115	6,037,057
Total net assets	74,517,220	56,452,301
Total liabilities and net assets	\$ 91,073,475	\$ 71,126,557



FY19 Moments

FORGING CONNECTIONS
IN ESSEX COUNTY



Supporters of ECCF

We are deeply grateful to all those who generously supported Essex County Community Foundation in fiscal year 2019 (July 1, 2018–Jun 30, 2019) with an operating gift of \$100 or more.

ECCF strives to keep an accurate record of all donors. Should you notice an error or omission, please contact us.

Anonymous+	Mr. and Mrs. Gerrit Bradley	Mr. Randolph Cotter	Mr. Stephen K. Fischer	Mr. Allan Huntley
501 Partners LLC	Mr. Samuel Brooks and Mrs. Sallie Scribner Brooks	Elizabeth Cotter Memorial Fund	Francis Family Fund	Mr. and Mrs. Stephen and Darcy Immerman
82491 Fund	Ms. Joan E. Brooks and Mr. James Garrels	Mr. Stephen F. Curran	Mr. and Mrs. Hollis French	Mr. and Mrs. Timothy A. Ingraham
Mrs. Barbara Almy	Brookwood Financial Partners, LLC	Mr. George L. Cushing and Ms. Elizabeth P. Hunt	Dr. Patricia A. Gentile	Institution for Savings
Mr. and Mrs. Roger W. Altreuter	Mr. and Mrs. James Bryant	Mr. and Mrs. John DaCosta	Mr. Robert Gillis and Ms. Pixie Harrington	Ipswich Bay Glass
Amelia Peabody Charitable Fund	Ms. Barbara Burnside	Ms. Naomi Dalessandro	Mr. Steven Golden	Citizens Inn, Inc.
Amelia Peabody Foundation	Mr. and Mrs. John Byrnes	David Tory Fund	Mr. Robert Goldman	Jackson Lumber and Millwork
Mr. Howard Amidon	Mr. and Mrs. Samuel Cabot III	Mr. G. Stevens Davis, Jr.	Mr. and Ms. Edward Goltra	Mr. Mark R. Jaffe and Mrs. Marcia Glassman-Jaffe
Mr. Lawrence Andrews	Cabot Performing Arts Center, Inc	Ms. Faith Delaney	Mr. and Mrs. John L. Good, III	Mr. and Mrs. Lance F. James
Ansara Fund for Essex County	Cabot Wealth Management	Digital Federal Credit Union	Mr. and Mrs. Robert C. Gore	Mr. Greg James
Mr. and Mrs. James S. Ansara	Mr. and Mrs. Joshua Cahill	Mr. Richard Dionne	GraVoc	Historic Salem Inc.
Anstiss & Co., P.C.	Ms. Shari L. Card	Mr. and Mrs. Matthew P. Doring	Mrs. Susan Gray	Mrs. Jody Johnson
Anthony & Dodge, P.C.	Carlson Family Trust	Mr. Peter Doyle	Groom Construction Co.	Johnson O'Connor Feron & Carucci LLP
ASD Fund	Mr. & Mrs. Christopher Carmosino	Ms. Suzanne C. Dubus	Mr. and Ms. Thor Hallowell	Ms. Deborah Kelsey
Ms. Elena Bachrach	Lowell Community Loan Fund Inc.	Ms. Adria Duijvestein	The Hamilton Group	Mr. and Mrs. Robert M. Knowles
Mr. Daniel Bakinowski & Ms. Betsy Hochberg	Tracey Chalifour	Ms. Janin Duran	Mrs. Leslie W. Hammond	Mr. and Mrs. John and Polly Knowles, Jr.
BankGloucester	Mr. and Mrs. Fran Cleary	Dusky Fund	Ms. JoeAnn Hart	Ms. Lianna Kushi
Ms. Alexandra Barker	Mr. Steven P. Cohen and Mrs. Andrea Macleod	Eastern Bank	Mr. and Mrs. Whitney Hatch	Ms. Carolyn Lackey
Barr Foundation	Mr. and Mrs. Patrick Wilson	Eastern Bank Charitable Foundation	Ms. Joan Hatem-Roy	Mr. Michael Laddin
Mr. and Mrs. Ryan Barrett	Ms. Ana Colmenero and Mr. Hoyt Ludington	EBSCO Industries, Inc.	Mr. and Mrs. Jerry Hausman	Lahey Health Shared Services
Mr. Richard Bass	Mr. and Mrs. John Colucci	Mr. and Mrs. Tom Eddy	Ms. Peggy Hegarty-Steck	Landmark School
Beauport Financial Services, LLC	Columbia Gas of Massachusetts	Mr. David Edwards	Mr. and Mrs. R. Craig Henkels	Ms. Holly Langer
Bertolon Family Foundation	Comcast NBC Universal	Ms. Kathy Egmont	Mr. and Mrs. David L. Henry	Langille Family Fund
Beverly Bank	Community Foundation of Western Mass.	Ms. Faith Emerson	Ms. Odanis M. Hernandez	Mr. and Mrs. Benjamin Langille
Mr. and Mrs. Scott Beyer	Mr. and Mrs. Kevin Connolly	Enbridge Foundation	Mr. and Mrs. Donald L. Hodgman	Mr. Paul Lanzikos
Mr. Josh Biber	Mr. and Mrs. Nathaniel S. Coolidge	Mr. and Mrs. Dominic Endicott	Ms. Stephanie Hood	Mr. and Mrs. Jean-Daniel G. LaRock
Ms. Bethany Blake		Endicott College	Dr. and Mrs. Robert A. Howell	Ms. Miriam G. Lasher
Bob Goldman Law		Enterprise Bank and Trust Company	Ms. Marcia J. Hunkins	Mr. and Mrs. W.J. Leaver
Bolder Board Training		Mr. and Mrs. Robert R. Fanning, Jr.		Dr. and Mrs. John S. Ledbetter
Mr. and Mrs. Andrew and Jennifer Borggaard		Mr. and Mrs. David D. Farzan		Mr. Chris Lovasco
Mr. and Mrs. Jay E. Bothwick		Mr. and Mrs. Richard Fates		Ms. Kate Luchini
Bradford & Bigelow		First Ipswich Bank		
Mr. Robert Bradford				

Ms. Ann Lyness Marblehead Bank Market Street Lynnfield Ms. Judith Martino Mass Development Finance Agency Mr. and Mrs. William Masterson Mr. Elton B. McCausland McLane Middleton Ms. Kara McLaughlin and Mr. John Keenan Ms. Cathy McLaurin Ms. Theresa McMillin Ms. Jane P. McNally Mr. Wilhelm Merck and Ms. Nonie Brady Merrimack Valley Business Emergency Fund Merry Fox Realty Mr. and Mrs. Rick and Pat Meservey Mr. and Mrs. David Mesinger Mr. and Mrs. Pete S. Michaels Millennium Pharmaceuticals Mr. and Mrs. Robert C. and Anne B. Miller Mr. & Mrs. Douglas Miller Mr. and Ms. Richard J. Minney Montserrat College of Art Mr. Benjamin B. Morrill Mr. Frederick S. Moseley IV Mr. Chad Mowery Ms. Bridget Murray Esq. Mr. Michael Murray Ms. Marianne Paley Nadel	Newburyport Five Cents Savings Charitable Foundation, Inc. Ms. Sandra Newman Niben Point Fund Dr. Jean Nichols and Mr. Richard diPerna NiSource Accounts Payable Mrs. Kristin Noon Ms. Judy Normandin North Shore Bank North Shore Community College North Shore Community Development Coalition Mr. Mickey Northcutt Northeast Arc Northern Essex Community College Mr. and Mrs. Gerald Norton Nutter, McClennen & Fish LLP Ms. Lisa Orgettas Ms. Christine Ortiz Ms. Elizabeth Parker Mr. David Parker Mr. and Mrs. Jon and Beth Payson Peabody Essex Museum People's United Bank People's United Community Foundation of Eastern Massachusetts Mr. and Mrs. Christopher Perkin Mr. Peter J. Pinciario Ms. Martha Planton Plummer Youth Promise Mr. Nicholas C. Pollard Mr. and Mrs. Michael G. Powell	Dr. Sandra Pierson Prior Ms. Mary Pritchard Proformance Ms. Jane Puffer Mr. Richard L. Purinton Mr. and Mrs. George Putnam, III Mr. David C. Quade and Ms. Susan Schuster Ms. Elaine Quinn Mr. and Mrs. Eugene Record Mr. and Mrs. Derek Reed Reynders, McVeigh Capital Management Ms. Theresa Riddle Ms. Rebecca Riff Mr. and Mrs. Patrick Q. Riordan Mr. Neal Roberts Mr. and Mrs. Heaton & Henrietta Robertson Robie Properties, LLC Ms. Susan T. Robie Ms. Kim Rock Rockport Mortgage Corporation Rockport Music Mr. Gary Romano and Ms. Karen O'Brien Romano Mr. and Mrs. James Rose Mr. and Mrs. Daniel Rosenthal Rosman Family Fund Ms. Wendy Roworth Mr. and Mrs. James A. Rullo Town of North Andover Mr. and Mrs. Peter M. Schwarzenbach Ms. Pamela C. Scott Mr. and Ms. Ralph Sevinor	Ms. Elizabeth Sheldon Mr. and Mrs. Binkley C. Shorts Ms. Susan McGibbon Sirois Small Steps Fund Mr. Derek Smith and Mrs. Rebecca Oldfield Smith Brace Cove Foundation St. John's Preparatory School Abbot & Dorothy Stevens Foundation Stop and Shop Mr. and Mrs. Richard L. Sumberg Sumberg Family Fund SV Design T & S Fund Mr. and Mrs. Steven M. Tadler Tatelman Family Foundation Ms. Nancy Taylor August TD Charitable Foundation Mr. and Mrs. Daniel Teague Temkin Financial Group The Financial Advisors, LLC Ms. Susan Todd Tower Family Fund Inc. The Peter & Elizabeth C. Tower Foundation Town of Andover Ms. Kristine Trustey and Mr. Sean McGraw Ms. Rosario Ubiera- Minaya United Way of Massachusetts Bay Inc. Ms. Katherine Urner- Jones	Mr. and Mrs. Timothy Vaill Mr. and Mrs. Peter H. Van Demark Peter and Kathleen Van Demark Fund Mr. and Mrs. Eyk and Rose-Marie van Otterloo van Otterloo Family Foundation Ms. Jean Verbridge Mr. and Mrs. William S. Wasserman Jr. Wasserman Fund Mr. and Mrs. Muddy Waters WCVB Channel 5 Edwin S. Webster Foundation Mr. Gordon Weeks and Ms. Carol Warfield Mr. Bill Weihs Mr. and Mrs. William B. Whiting Ms. Jennifer Field Whitman Mr. and Mrs. Edward J. Wilson Richard D. Wilson Community Response Gift Fund Windover Construction Ms. Ellen Wineberg Mr. and Mrs. James Worden Worden Family Foundation Mr. and Mrs. Richard Yagjian Ms. Mary Ellen Yates YMCA of the North Shore Inc. Zampell Companies Ms. Linda Zimmerman
--	---	---	--	--

ECCF Leadership

2019 ECCF BOARD OF TRUSTEES



JON PAYSON (Chair)
Retired, Wellington
Management Company



LIZ MOULTON
Sports Business Practice,
Spencer Stuart



STEVEN P. COHEN
Retired, Management Consultant/
Business School Professor



CHRISTINE ORTIZ
Professor, Massachusetts
Institute of Technology



JOHN COLUCCI
Managing Director,
McLane Middleton



DEREK REED
Managing Partner,
Beauport Financial Services, LLC



MATT DORING (Clerk)
Partner, Nutter McClennen &
Fish LLP



JIM RULLO
Retired, Wellington Management
Company



BOB FANNING (Treasurer)
Retired, President & CEO,
N.E. Health Systems



PAMELA CARRINGTON SCOTT
President and CEO, LVCC, Inc



BOB GOLDMAN
Attorney,
Bob Goldman Law



DICK SUMBERG
CEO, The Financial Advisors, LLC



BOB GORE
Retired, Human Resources
Executive, Advisor



JEAN VERBRIDGE
Principal,
SV Design



ALLAN W. HUNTLEY
Founder and CEO,
Human Centered Apps



RICH YAGJIAN
Executive Vice President & COO,
Hunt's Photo & Video



MOIRA MCNAMARA JAMES
Director, Media and
Communications,
The Conference Board



ANITA RAJAN WORDEN
Founder, Lightspeed Energy LLC



BEN LANGILLE
Senior Vice President
and Senior Counsel,
Affiliated Managers Group

2019 COUNTY LEADERSHIP COUNCIL

Karen Andreas

Karen Ansara

Ryan Barrett

Polly Beyer

Scott Beyer

Leila Blodgett

Jennifer Borggaard

Joan Brooks

Tom Burger

John Byrnes

Mollie Byrnes

Chrissy Cahill

Josh Cahill

Ana Colmenero

Diane Connolly

Kevin Connolly

George Cushing

Naomi Dalessandro

Steve Davis

Linda Durkin

Tom Durkin

Jennifer Eddy

Tom Eddy

Patricia Gentile

Julie Gerschick

Joseph Giso

Lane Glenn

Edith Pepper Goltra

Jack Good

Susan Gray

Bonnie Henry

David Henry

Tricia Herring

Jim Horrocks

Bob Howell

Ralph James

Courtney Kagan

John Keenan

Katie King

Joe Knowles

Holly Langer

Michelle Langille

Bill Masterson

Sandy McGrath

Cynthia McGurren

Colleen McMillan

Tim Murnane

Jean Nichols

Bernadette Orr

Brian Patrican

Jennifer Perkin

Chat Reynders

Rebecca Riff

Julie Riordan

Pat Riordan

Andree Robert

Gary Romano

Jim Rose

Julie Rose

Jackie Rosenthal

Mary Sarris

Betsy Shields

Peter Schwarzenbach

Priscilla Schwarzenbach

Kevin Tierney

Carol Townsend

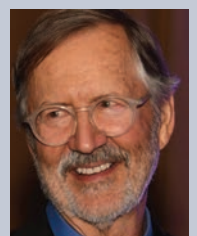
David Turnbull

Jen Field Whitman

IN MEMORIAM: STEVEN BRUCE DODGE 1945-2019

Steve Dodge, pioneering entrepreneur in telecommunications and real estate, was a generous ECCF donor and fundholder. The founder of several major communications and real estate companies, including Windover Development, Steve had many philanthropic passions, but had a strong focus on education, the arts and encouraging the next generation of philanthropists. Montserrat

College of Art, The Cabot and nonprofit Root, were among the many institutions that the Dodge family impacted with their support. Recognized as the driving force behind the ongoing revitalization of the city of Beverly, Steve will be most remembered for his humility, selfless generosity, sense of humor and dedication to his family.



ECCF COMMITTEES

EXECUTIVE COMMITTEE

Jon Payson, Chair
John Colucci, Vice Chair
Matt Doring
Bob Fanning
Moirra McNamara James
Jim Rullo

GOVERNANCE COMMITTEE

Dick Sumberg, Chair
Steven P. Cohen
Matt Doring
Bob Gore
Moirra McNamara James
Liz Moulton
Jon Payson

AUDIT COMMITTEE

John Colucci, Chair
Joyce Ripianzi
Derek Smith

FINANCE COMMITTEE

Bob Fanning, Chair
Bob Goldman
Bob Gore
Allan Huntley
Jon Payson
Jim Rullo
Pamela Scott
Derek Smith

INVESTMENT COMMITTEE

Jim Rullo, Chair
David Henry
Ben Langille
Mimi O'Bara
Jon Payson
Joe Trainor

DEVELOPMENT COMMITTEE

Moirra McNamara James,
Chair
Christine Ortiz
Jon Payson
Derek Reed
Jean Verbridge
Rich Yagjian
Anita Worden

GRANTS MANAGEMENT COMMITTEE

Matt Doring, Chair
Rosemary Costello
Paul Haggerty
Martha Hodgman
Holly Langer
Michelle Langille
Maria Mesinger
Sandra Newman
Kristin Noon
Jon Payson
Martha Rawlins
Sherry Rogers
Jody Smith
Susan Turnbull

PROFESSIONAL ADVISORS COMMITTEE

DAVID MCKECHNIE, Chair
Beauport Financial Services

MARK ALAIMO
LCW Certified Public
Accountants

DANIEL BAKINOWSKI
Tax Attorney (retired)

TERRY BEATON
Beaton Management Co.

DIANNE BRAND
The Financial Advisors, LLC

JONATHAN BREEN
Boston Harbor Wealth
Advisors, LLC

THOMAS BURGER
The Hamilton Group

PETER CARUSO
Caruso and Caruso, LLP

STEPHEN CURRAN
Boston Hill Advisors, LLC

GEORGE CUSHING
McLane Middleton

BOB GOLDMAN
Bob Goldman Law LLP

JAMES GUARINO
Baker Newman Noyes

RYAN HENDRICKSON
Boston Harbor Wealth
Advisors, LLC

DANIEL HOVER
Eastern Bank
Wealth Management

ROBERT LIEBERSON
Moody Lynn & Lieberman
Investment Counsel

BRIDGET MURRAY
CannonMurrayLaw, LLC

ANDREW NOVELLINE
Abbot Financial Management

DEBORAH PECHET QUINAN
Ruberto Israel & Weiner P.C.

DEREK REED
Beauport Financial Services

JACK REEDER
The Bulfinch Group

WILLIAM RYAN
Ryan Financial

MATTHEW SCHROEDER
Great Point Wealth Advisors,
LLC

BRADLEY SMALL
Wells Fargo Advisors

DICK SUMBERG
The Financial Advisors, LLC

SUSAN WEEKS
Vesey & Weeks, PC

ECCF STAFF

BETH FRANCIS
President and CEO

CRYSTAL BATES
Director of Development and
Communications

HEHERSHE BUSUEGO
Senior Program Officer

RICK CROWLEY
Chief Fiscal Officer

MICHELLE XIARHOS CURRAN
Communications Writer

NICOLE DEMARS
Communications Specialist

JEAN GENNACO
Finance Assistant

JOAN HENKELS
Donor Services Officer

STACEY LANDRY
Director of Gift Planning &
Advisor Relations

STRATTON LLOYD
COO and Vice President for
Community Leadership

KERI-ANN MISERANDINO
Administrative Assistant

MICHELLE PELLETIER
Finance Manager

KAREN RISTUBEN
Program Director, Creative
County Initiative

CAROL LAVOIE SCHUSTER
Vice President for Grants and
Services

REBECCA TURNER
Institute for Trustees
Consultant



ESSEX COUNTY COMMUNITY FOUNDATION

Essex County Community Foundation | 175 Andover Street, Danvers, MA 01923 | 978.777.8876

www.eccf.org | [@eccfgives](https://twitter.com/eccfgives) | follow us on [f](https://www.facebook.com/eccf)



Essex County Community Foundation meets national standards for
U.S. Community Foundations.