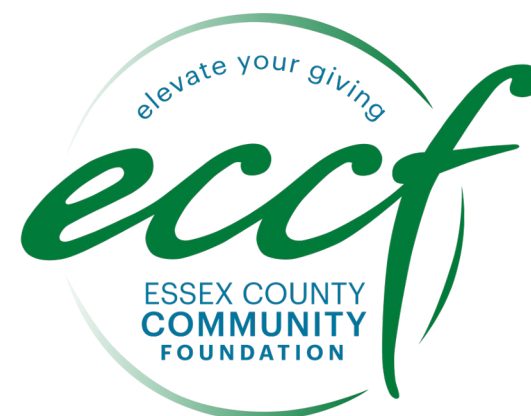


Essex County Community Foundation Impact Investment Strategy





Dr. Stephanie Gripne

CEO

Impact Finance Center



Stratton Lloyd

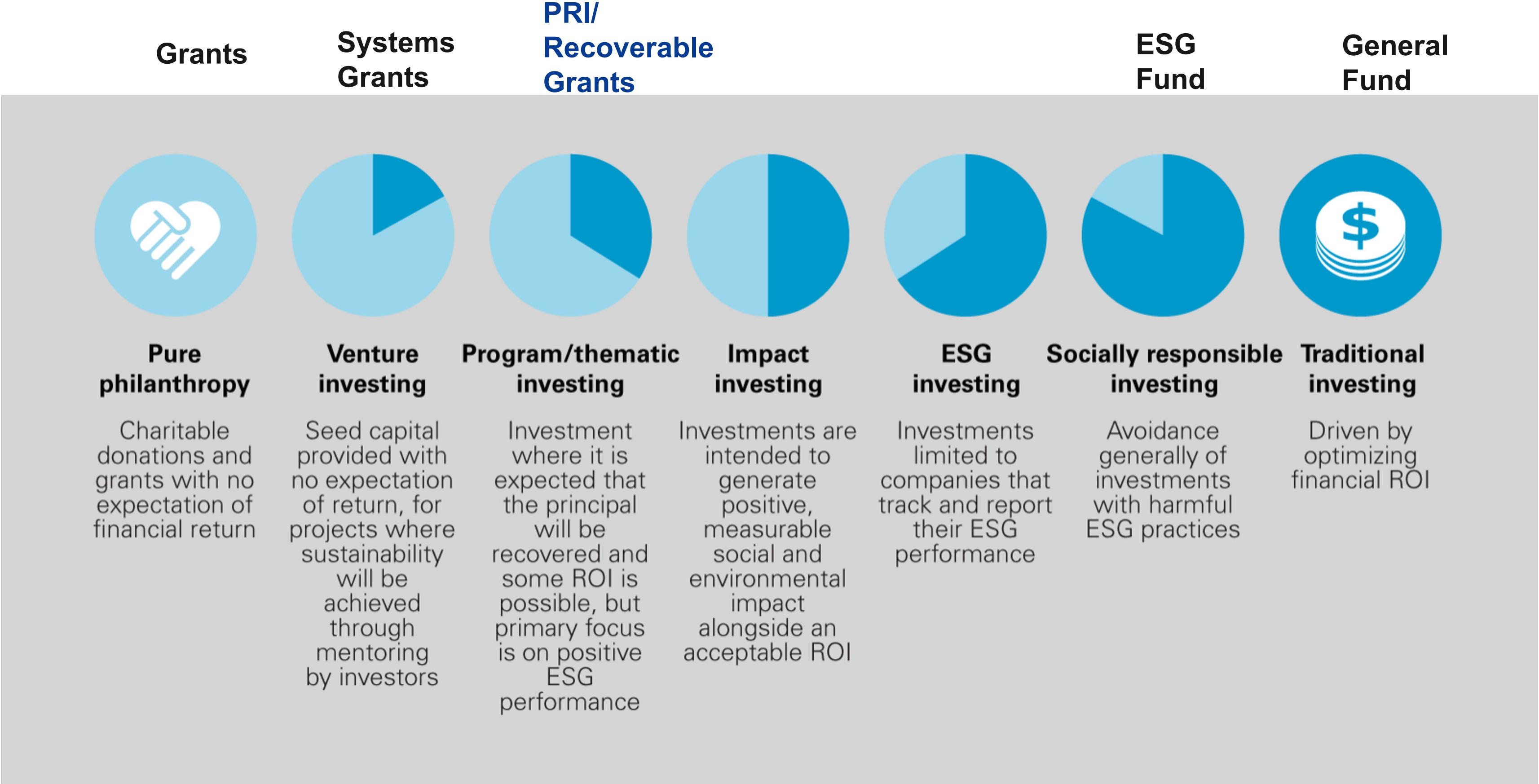
Executive Vice President and COO
Essex County Community Foundation

IMPACT
FINANCE CENTER

**THE GILSON FAMILY
FOUNDATION**



Investing Continuum: Grants to Traditional



Background and Context

In FY23, to build off Small Business and Microlending work:

- Launched Working Group and Internal Effort to explore Place Based Impact Investing(PBII) and ECCCF's Role
- Engaged Impact Finance Center (first time) to assist ECCCF to map PBII Ecosystem in Essex and Define Strategy

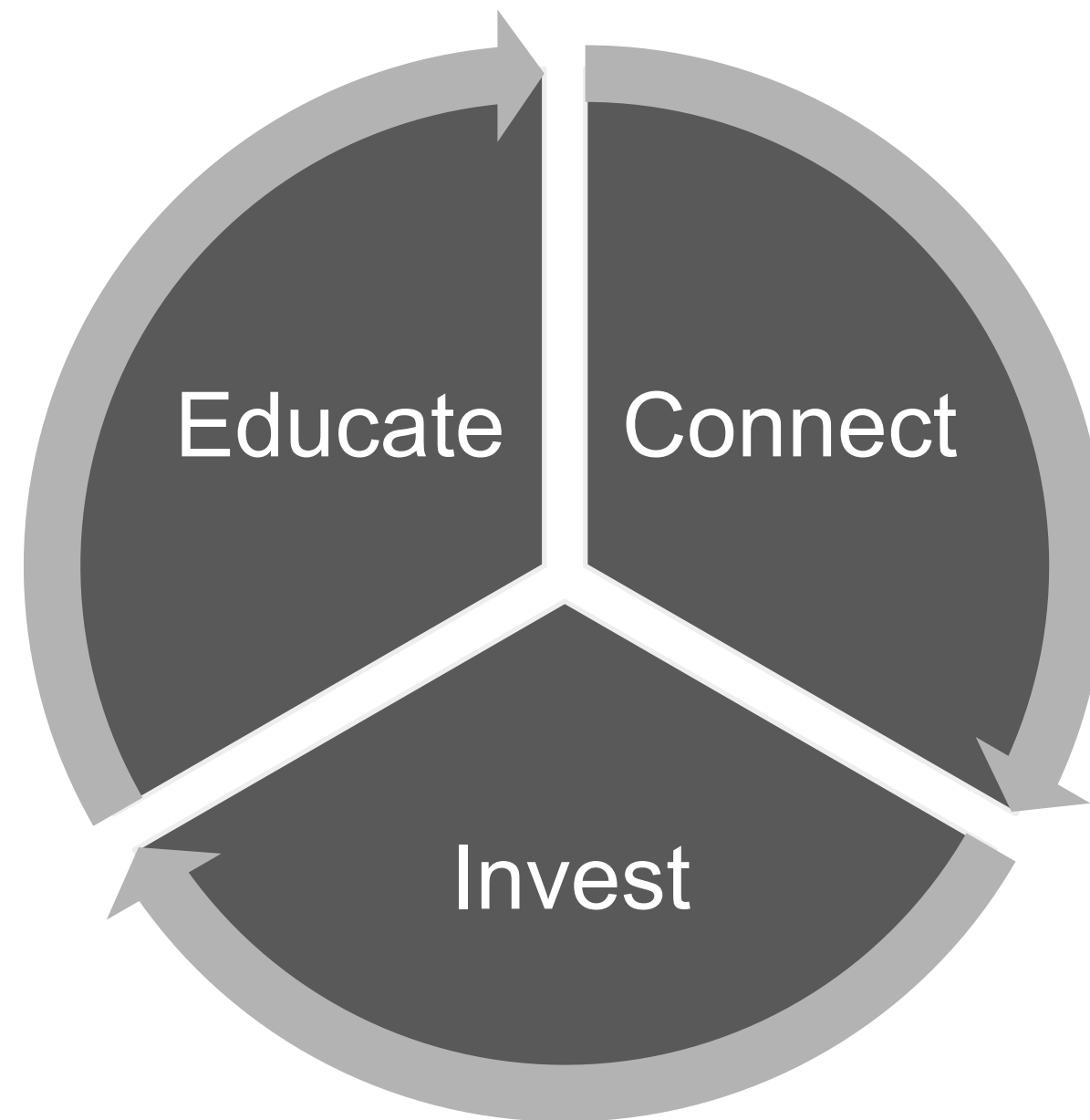
ECCF Impact Investing Vision

Essex County Community Foundation (ECCF) is the impact investing hub of Essex County, building and supporting an ecosystem that *inspires funders and investors to increase the size of the social investment pie in Essex County at philanthropic and market rates.*

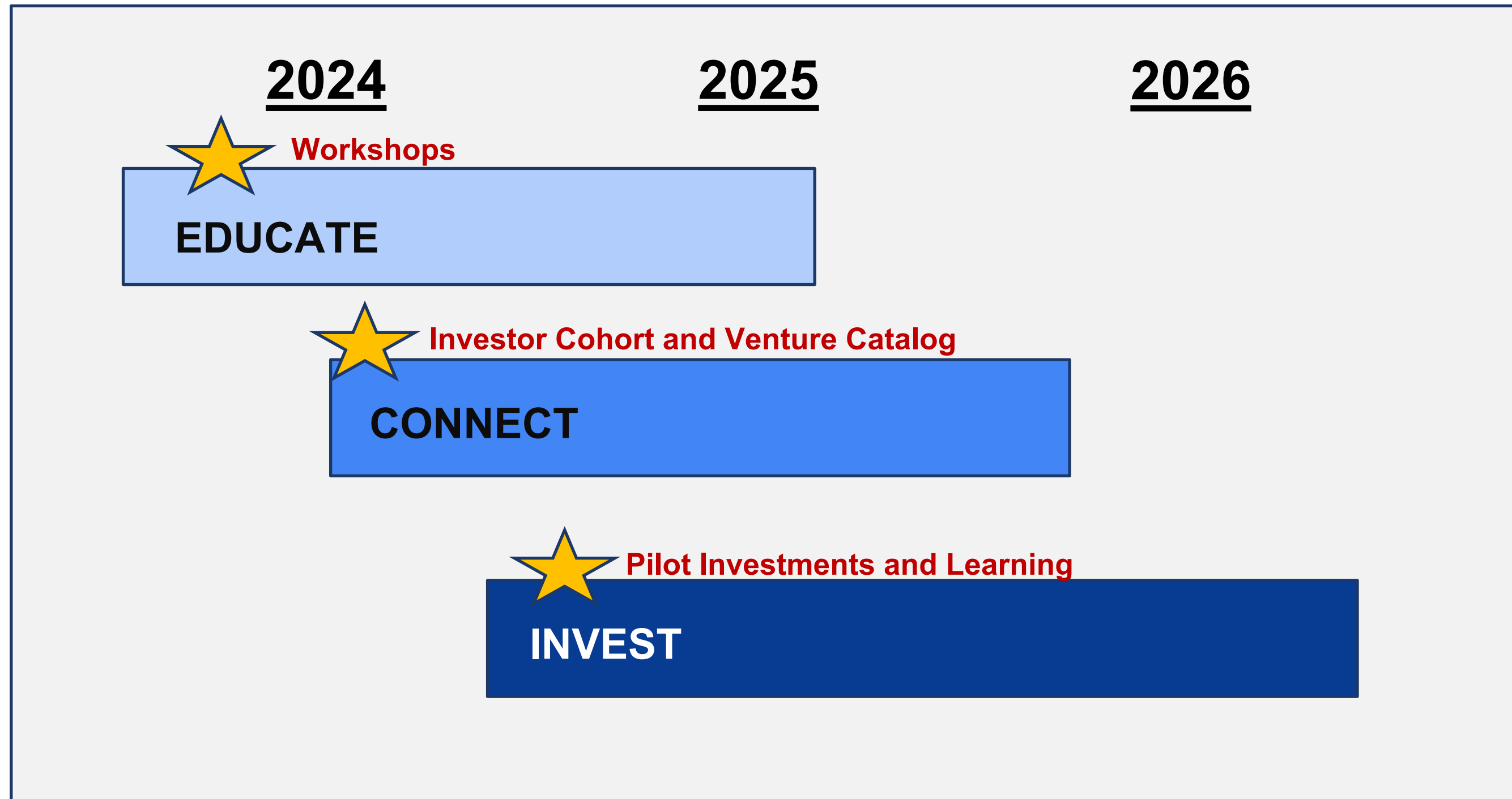
This work builds on and amplifies ECCF's data-driven, systems-based philanthropy approach to connect community ventures with resources that contribute to the equitable economic development of the county.

.

Essex County Has the Elements to Build a Vibrant Impact Investing Ecosystem



Sequencing of Strategy and Work



Upcoming Opportunities

- May 21 – Arts Investor Workshop
- May 22 - Housing Investor Workshop
- May 23 - Social Ventures

Questions

IMPACT
FINANCE CENTER



THE GILSON FAMILY
FOUNDATION